

s|so

Family Concert

peter and the wolf



february
23
2020



St. Louis Symphony Orchestra stéphane denève : music director

Concert Program

Sunday, February 23, 3:00pm

family concert

peter and the wolf

Gemma New, conductor

Bobby Norfolk, narrator

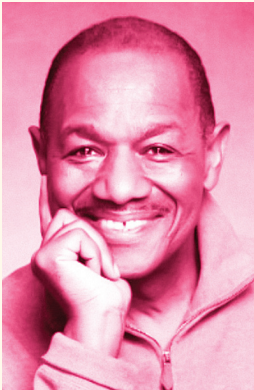
Dukas	Fanfare from <i>La Péri</i>
Mozart	<i>German Dance</i> No. 6, K.571
Ravel	<i>Rigaudon</i> from <i>Le Tombeau de Couperin</i>
Copland	“Hoe Down” from <i>Rodeo</i>
Prokofiev	<i>Peter and the Wolf</i> , op. 67 Bobby Norfolk, narrator

This concert is dedicated in memory of **Sanford Jaffe**
Presented in partnership with the **Endangered Wolf Center**
Media support provided by **Nine Network**



Gemma New

Sought after for her insightful interpretations and dynamic presence, New Zealand-born conductor Gemma New is currently Music Director of the Hamilton Philharmonic Orchestra in Ontario, Canada, Resident Conductor of the St. Louis Symphony Orchestra, and Music Director of the St. Louis Symphony Youth Orchestra.



Bobby Norfolk

Bobby Norfolk is a three-time Emmy award-winning storyteller/author, well known for his lively animation and special sound effects. He's like an adventure story come to life!
bobbynorfolk.com

On the Ride Home

Who was your favorite character in *Peter and the Wolf*? Why did you like this character? What did you notice about their musical theme? Together, create a new character for *Peter and the Wolf*.

What's their name?

What sort of personality do they have?

What do they sound like?

What instrument of the orchestra will play their theme?

What will they do in the story?

Draw a picture of your new character and ask your grown-up to share it with us on social media using #slsofamily.

coming soon...



April 19 at 3:00pm **World of Water** Gemma New, conductor

From vast ocean landscapes to small babbling brooks, the enchanting world of water has been inspiring composers for centuries. Join your SLSO as we dive into musical works for the entire family, inspired by water.

Presented in partnership with the **St. Louis Aquarium at Union Station**.



@stlsymphony



@slso



@St. Louis Symphony Orchestra

slso.org/family | 314-534-1700