

CONCERT PROGRAM
September 19-21, 2014

Richard Kaufman, conductor
St. Louis Symphony Chorus
Amy Kaiser, director

LIVE AT POWELL HALL

DISNEY'S PIRATES OF THE CARIBBEAN: DEAD MAN'S CHEST

Music by Hans Zimmer

© 2006 Walt Disney Music Company

There will be one 20-minute intermission.

Amy Kaiser is the AT&T Foundation Chair.

PIRATES OF THE CARRIBEAN: DEAD MAN'S CHEST

The Cast

Johnny Depp Jack Sparrow
Orlando Bloom Will Turner
Keira Knightley Elizabeth Swann
Jack Davenport Norrington
Bill Nighy Davy Jones
Jonathan Pryce Governor Weatherby Swann
Lee Arenberg Pintel
Mackenzie Crook Ragetti
Kevin McNally Gibbs
David Bailie Cotton
Stellan Skarsgård Bootstrap Bill
Tom Hollander Cutler Beckett
Naomie Harris Tia Dalma
Martin Klebba Marty
David Schofield Mercer

Directed by Gore Verbinski

Music by Hans Zimmer

RICHARD KAUFMAN

Richard Kaufman has devoted much of his musical life to conducting and supervising music for film and television productions, as well as performing film and classical music in concert halls and on recordings. This year marks his 23rd season as Principal Pops Conductor of Orange County's Pacific Symphony and his ninth season with the Chicago Symphony series, *CSO at the Movies*. He is Pops Conductor Laureate of the Dallas Symphony, and regularly appears as a guest conductor with orchestras throughout the United States and around the world. In addition to conducting "traditional" concert presentations, Kaufman often leads performances of complete film scores in concert, synchronizing the music to the actual film as it is shown on the screen above the orchestra.

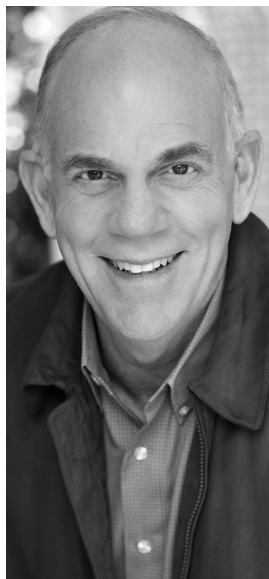
Kaufman received the 1993 Grammy Award for Best Pop Instrumental Performance. He has conducted multiple recordings with the Nuremberg and New Zealand Symphonies, the Brandenburg Philharmonic, and the London Symphony Orchestra.

For 18 years, Kaufman supervised music for MGM Studios in both feature film and television, receiving two Emmy Award nominations. As a unique part of his career, he coached various actors in musical roles including Jack Nicholson, Dudley Moore, and Tom Hanks.

As a violinist, Kaufman performed on numerous film and television scores including *Jaws* and *Close Encounters of the Third Kind*, and has recorded with such notable artists as John Denver, Burt Bacharach, and Ray Charles.

Kaufman is a graduate of California State University at Northridge, and on the Music Advisory Board of the Young Musicians Foundation. He lives in Southern California with his wife, Gayle, a former dancer in film, television, and on Broadway. His daughter, actress/singer Whitney Claire Kaufman, was a member of the cast of the National Tour of *Mama Mia*.

Richard Kaufman is proud to be represented by Opus 3 Artists.



Kevin McNamee

Richard Kaufman most recently performed with the St. Louis Symphony in May 2013.



Amy Kaiser begins her 20th season as Director of the St. Louis Symphony Chorus this fall.

AMY KAISER

AT&T FOUNDATION CHAIR

One of the country's leading choral directors, Amy Kaiser celebrates her 20th season as Director of the St. Louis Symphony Chorus in 2014-15. Kaiser has conducted the St. Louis Symphony in Handel's *Messiah*, Schubert's Mass in E-flat, Vivaldi's *Gloria*, and sacred works by Haydn and Mozart as well as Young People's Concerts. She has made eight appearances as guest conductor for the Berkshire Choral Festival in Sheffield, Massachusetts, Santa Fe, and at Canterbury Cathedral. As Music Director of the Desoff Choirs in New York for 12 seasons, she conducted many performances of major works at Lincoln Center. Other conducting engagements include concerts at Chicago's Grant Park Music Festival and more than fifty performances with the Metropolitan Opera Guild. Principal Conductor of the New York Chamber Symphony's School Concert Series for seven seasons, Kaiser also led many programs for the 92nd Street Y's acclaimed *Schubertiade*. She has conducted over twenty-five operas, including eight contemporary premieres.

A frequent collaborator with Professor Peter Schickele on his annual PDQ Bach concerts at Carnegie Hall, Kaiser made her Carnegie Hall debut conducting PDQ's *Consort of Choral Christmas Carols*. She also led the Professor in PDQ Bach's *Canine Cantata "Wachet Arf"* with the New Jersey Symphony.

Kaiser has led master classes in choral conducting at Indiana University Jacobs School of Music, served as faculty for a Chorus America conducting workshop, and as a panelist for the National Endowment for the Arts.

Amy Kaiser has prepared choruses for the New York Philharmonic, Ravinia Festival, Mostly Mozart Festival and Opera Orchestra of New York. She also served as faculty conductor and vocal coach at Manhattan School of Music and the Mannes College of Music. An alumna of Smith College, she was awarded the Smith College Medal for outstanding professional achievement.

ST. LOUIS SYMPHONY CHORUS 2014-2015

CREW OF THE BLACK PEARL

Amy Kaiser
Captain (Director)

Leon Burke III
First Mate (Assistant Director)

Gail Hintz
Boatswain (Accompanist)

Susan Patterson
Quartermaster (Manager)

Paula N. Bittle
Richard F. Boyd
Daniel P. Brodsky
Leon Burke III
Alyssa Callaghan
Peggy Cantrell
Victoria A. Carmichael
Mark P. Cereghino
David Cox
Derek Dahlke
Zachary K. Devin
Mary C. Donald
Ladd Faszold
Heather Fehl
Mark Freiman

Jeffrey E. Heyl
Heather Humphrey
Debby Lennon
Gina Malone
Daniel Mayo
Rachael McCreery
Katherine Menke
Jei Mitchell
Brian K. Mulder
Johanna Nordhorn
Duane L. Olson
Heather McKenzie Patterson
Gregory J. Riddle
Patti Ruff Riggle
Michele Suzanne Rose
Nathan Tulloch Ruggles
Paul N. Runnion
Mark Saunders
Mark V. Scharff
Adam D. Steffo
J. David Stephens
Robyn Danielle Theison
Natanja Tomich
DeWayne Trainer
Dennis Willhoit
Mary M. Wissinger

LIVE AT POWELL HALL: *GLADIATOR*



OCTOBER 31-NOVEMBER 2

One of you wants a night at the symphony. The other wants to see an action flick. The solution to the date-night dilemma: *Gladiator* with the St. Louis Symphony. A tremendous score played live by the orchestra while Russell Crowe takes on all comers with knife and sword. Everybody wins!

AUDIENCE INFORMATION

BOX OFFICE HOURS

Monday-Saturday, 10am-6pm; Weekday and Saturday concert evenings through intermission; Sunday concert days 12:30pm through intermission.

TO PURCHASE TICKETS

Box Office: 314-534-1700
Toll Free: 1-800-232-1880
Online: stlsymphony.org
Fax: 314-286-4111

A service charge is added to all telephone and online orders.

SEASON TICKET EXCHANGE POLICIES

If you can't use your season tickets, simply exchange them for another Wells Fargo Advisors subscription concert up to one hour prior to your concert date. To exchange your tickets, please call the Box Office at 314-534-1700 and be sure to have your tickets with you when calling.

GROUP AND DISCOUNT TICKETS

314-286-4155 or 1-800-232-1880 Any group of 20 is eligible for a discount on tickets for select Orchestral, Holiday, or Live at Powell Hall concerts. Call for pricing.

Special discount ticket programs are available for students, seniors, and police and public-safety employees. Visit stlsymphony.org for more information.

POLICIES

You may store your personal belongings in lockers located on the Orchestra and Grand Tier Levels at a cost of 25 cents.

FM radio headsets are available at Customer Service.

Cameras and recording devices are distracting for the performers and audience members. Audio and video recording and photography are strictly prohibited during the concert. Patrons are welcome to take photos before the concert, during intermission, and after the concert.

Please turn off all watch alarms, cell phones, pagers, and other electronic devices before the start of the concert.

All those arriving after the start of the concert will be seated at the discretion of the House Manager.

Age for admission to STL Symphony and Live at Powell Hall concerts varies, however, for most events the required age is five or older. All patrons, regardless of age, must have their own tickets and be seated for all concerts. All children must be seated with an adult. Admission to concerts is at the discretion of the House Manager.

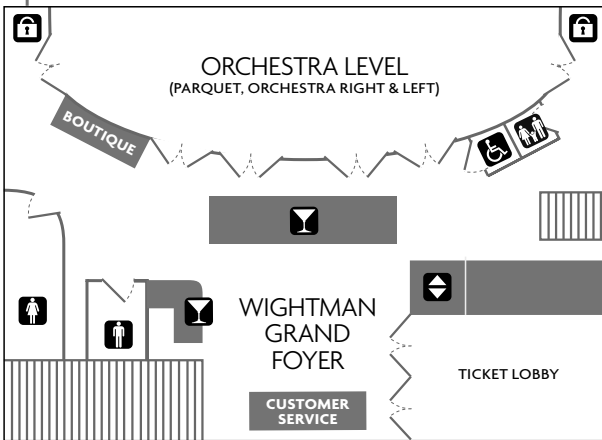
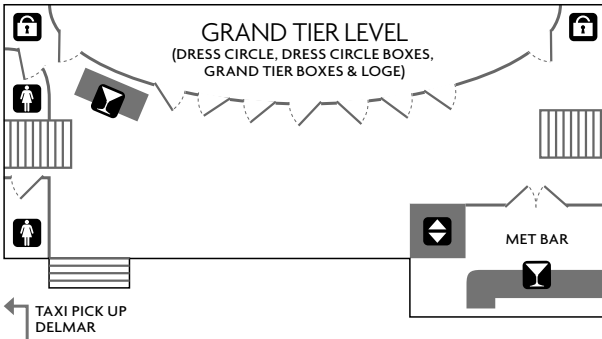
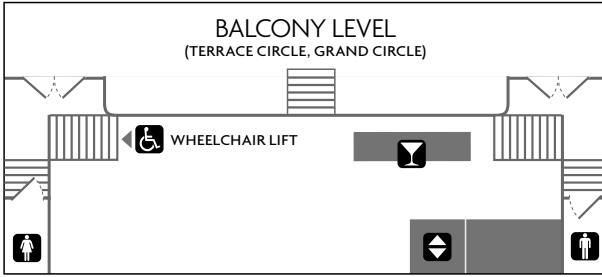
Outside food and drink are not permitted in Powell Hall. No food or drink is allowed inside the auditorium, except for select concerts.

Powell Hall is not responsible for the loss or theft of personal property. To inquire about lost items, call 314-286-4166.

POWELL HALL RENTALS

Select elegant Powell Hall for your next special occasion. Visit stlsymphony.org/rentals for more information.

POWELL HALL



- | | | | |
|---|------------------|---|------------------------|
|  | LOCKERS |  | BAR SERVICES |
|  | WOMEN'S RESTROOM |  | HANDICAPPED-ACCESSIBLE |
|  | MEN'S RESTROOM |  | FAMILY RESTROOM |
|  | ELEVATOR | | |

Please make note of the EXIT signs in the auditorium. In the case of an emergency, proceed to the nearest EXIT near you.